

## ManageEngine ADManager Plus

# A Unified Active Directory (AD), Exchange, and Microsoft 365 management and reporting solution

### Highlights

- One-step user provisioning in AD, Microsoft 365, and Exchange
- Bulk management of AD objects via CSV files and intelligent templates
- Over 200 pre-packaged, actionable reports
- Automation of routine tasks such as AD user creation and clean-up
- Role or group/OU-based help desk delegation
- Integration with popular SIEM, HCM, and help desk tools.
- iOS and Android mobile apps.



### The Active Directory management challenge

Every IT administrator faces the challenge of managing AD objects, Microsoft 365, and Exchange mailboxes for multiple stakeholders on a daily basis. But manually performing complex tasks on multiple platforms is time-consuming, and error-prone.

### The solution

ManageEngine ADManager Plus offers the capability to manage AD, Exchange, Microsoft 365, Skype for Business, and Google Workspace accounts from a single console. This web-based solution can help IT administrators manage AD objects, Exchange mailboxes, Microsoft 365 licenses, and more in bulk. It offers a built-in library of over 200 reports to fetch vital information on AD objects. Other capabilities include help desk delegation, customizable workflow, automation, and backup and recovery.

“

*We evaluated ScriptLogic Active Administrator, Quest AD management tool and ADManager Plus to solve our day-to-day AD management & reporting needs. ADManager Plus with its high-end features and low-end cost was an obvious choice.*”

**Meraz Nasi,**  
Manager of Infrastructure (ITS),  
Interfaith Medical Center,  
New York, United States.

### ADManager Plus is available in two editions:

- Standard
- Professional

Starts at \$595

Licensing model: Domains (with unlimited objects) and number of help desk technicians

## One-stop AD Management

- Create users in AD, Exchange, Microsoft 365, Google Workspace, and Skype for Business (Lync) in one step.
- Create or modify AD objects (users, groups, contacts, OUs, and computers) in bulk via CSV import.
- Perform AD tasks such as password reset, account unlock, cleanup, and more.
- Streamline the management of AD objects with customizable templates.
- Assign, replace, or revoke Microsoft 365 licenses in bulk.
- Manage shared, remote, room, and equipment mailboxes.
- Migrate user accounts and groups across domains in the same forest using GUI-based actions.
- Manage Group Policies by creating, editing, and linking GPOs effortlessly.

## Script-free reporting

- Generate and schedule more than 200 pre-configured, granular reports on AD, Exchange, Microsoft 365, and Google Workspace.
- View inactive users, locked out users, and disabled computers, in just a few clicks.
- Create custom AD reports.
- Export reports in multiple formats including HTML, PDF, XLS, XLSX, CSV, and CSVDE.
- Generate compliance reports to meet regulatory standards such as SOX, GDPR, PCI-DSS, HIPAA, and more.

## Non-invasive delegation to help desk technicians

- Granularly delegate AD, Microsoft 365, and Google Workspace tasks to help desk technicians for specific OUs.
- Delegate tasks such as resetting passwords, creating users, and more.
- Delegate permissions without elevating technicians' privileges in Active Directory.

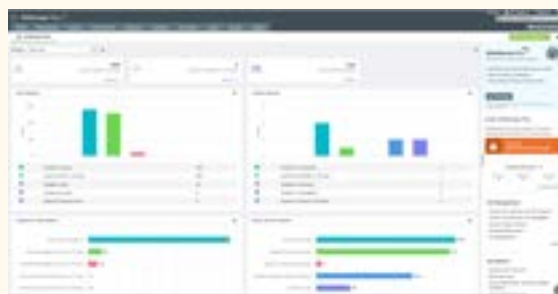
## Automation and workflow

- Automate routine Active Directory tasks such as user onboarding and stale account clean-up.
- Exercise control over automated tasks by enforcing workflow with automation
- Configure a multi-level workflow to validate requests from users.
- Limit access to resources for specific time intervals using automation policies.
- Create event-driven orchestration policies that automatically carry out chain of tasks like adding and revoking accesses post provisioning and de-provisioning respectively.

## Backup and recovery

- Backup and restore AD objects, such as users, computers, contacts, groups, OUs, and GPOs, without directly accessing the DC.
- Recover objects completely or granularly without having to restart your DCs.
- Empower your help desk by delegating AD backup and recovery rights to specific OUs.
- Keep track of backup and restore activities with the help of audit reports.
- Back up, restore, and roll back Google Workspace mailboxes, user drives, and calendar items.

## Customizable Dashboard



## System Requirements

**Processor:** P4 - 1.6GHz. **RAM:** 1GB.

**Disk space:** 4GB.

**Supported Windows OS versions:**

Windows Server 2008 and above

Windows 7 and above

**Supported browsers:**

Internet Explorer 10 and above, Mozilla Firefox, Google Chrome, Microsoft Edge

**Website:**

<https://www.manageengine.com/products/ad-manager/>

**Sales:** [sales@manageengine.com](mailto:sales@manageengine.com)

**Support:** [support@admanagerplus.com](mailto:support@admanagerplus.com)

**Toll-free number:** +1 925 924 9500

[\\$ Get Quote](#)

[↓ Download](#)